

## LIGHT SOURCE

LED quantity	1	
Power max	9 W - 18 W - 27W - 36W - 45W (24 Vdc) 11W- 21W - 30W - 40W - 50W (220-240 Vac)	
Total lumen output (3000K-L. 30cm)	9W:	11W:
	10° - 872 lm	10° - 872 lm
	25° - 836 lm	25° - 836 lm
	40° - 734 lm	40° - 734 lm
	60° - 772 lm	60° - 772 lm
Efficacy lm/W (3000K-L.30cm)	EII - 820 lm	EII - 820 lm
	9W:	11W:
	10° - 97 lm/W	10° - 79 lm/W
	25° - 93 lm/W	25° - 76 lm/W
	40° - 81 lm/W	40° - 67 lm/W
CRI	60° - 86 lm/W	60° - 70 lm/W
	EII - 91 lm/W	EII - lm/W
LED Temperature	2200K - 2700K - 3000K - 3000K CRI>90 - 4000K -DW	
Average operational life	50.000 hours	

## OPTIC

Material	PMMA
Available optics	10° - 25° - 40° - 60° - Elliptical lens
Beam direction	Fixed (without accessories)
Flux symmetry	Symmetrical

## FIXTURE

Material	Aluminum
Available body finishes	Hard coat anodized: 4 - Black
IP Rate	IP67
IK Rate	IK10
Working Temperature	-20° ÷ +40°
Integrated fixing Systems	-

## ELECTRICAL FEATURES

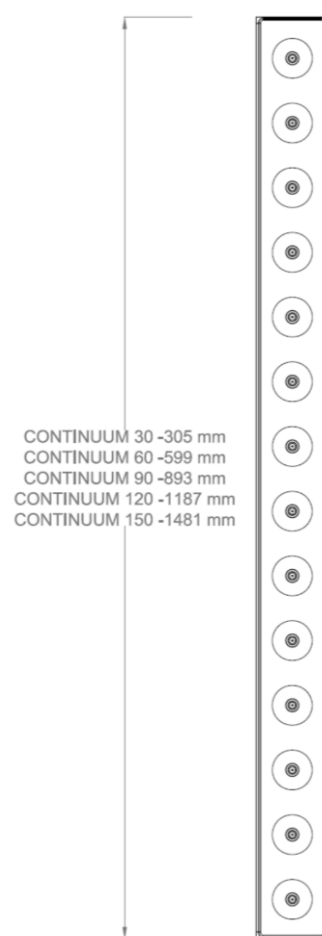
Driver	Built-in driver / Remote
Dimmable	Push, 1-10V, DALI
Connection	In parallel at 220-240Vac / 24Vdc
Class	II (220-240 Vac) / III (24 Vdc)

## MECHANICAL FEATURES

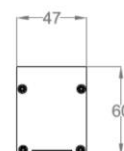
Dimensions	47 x 46 (60 within driver) x 305- 599- 893- 1187- 1481 mm
Weight	1100 gr -2200 gr - 3300 gr - 4400 gr - 5500 gr
Installation	Wall, ceiling, floor mounting
Cut-out	-
Use	Outdoor

## ACCESSORIES

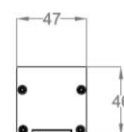
Filters	-
Visors	-
Box/ Frame	-
Installation tool	-
Fixing elements	Fixed bracket, Fixing plate, Adjustable bracket H.30 mm, H.50 mm, H.80 mm



BUILT-IN DRIVER  
DALI  
ON/OFF



REMOTE DRIVER  
24 Vdc



## PHOTOMETRIC DATA

Elliptical lens – 9W/11W				Elliptical lens – 9W/11W							
H(m)	D(m)	Emax(lx)	Eav(lx)	H(m)	D(m)	Emax(lx)	Eav(lx)				
<b>10°</b>				<b>50°</b>							
<u>1.00</u>	0.19	3919	2451	<u>1.00</u>	0.92	3919	2451				
<u>2.00</u>	0.37	980	613	<u>2.00</u>	1.83	980	613				
<u>3.00</u>	0.56	435	272	<u>3.00</u>	2.75	435	272				
<u>4.00</u>	0.75	245	153	<u>4.00</u>	3.67	245	153				
<u>5.00</u>	0.94	157	98	<u>5.00</u>	4.58	157	98				
UGR max=7				UGR max= 14							
<b>10° Lens – 9W/11W</b>				<b>25° Lens – 9W/11W</b>				<b>40° Lens – 9W/11W</b>			
H(m)	D(m)	Emax(lx)	Eav(lx)	H(m)	D(m)	Emax(lx)	Eav(lx)	H(m)	D(m)	Emax(lx)	Eav(lx)
<b>10°</b>				<b>25°</b>				<b>40°</b>			
<u>1.00</u>	0.20	8583	5511	<u>1.00</u>	0.47	3384	2094	<u>1.00</u>	0.64	1479	924
<u>2.00</u>	0.40	2146	1378	<u>2.00</u>	0.95	846	523	<u>2.00</u>	1.27	370	231
<u>3.00</u>	0.61	954	612	<u>3.00</u>	1.42	376	233	<u>3.00</u>	1.91	164	103
<u>4.00</u>	0.81	536	344	<u>4.00</u>	1.89	212	131	<u>4.00</u>	2.55	92	58
<u>5.00</u>	1.01	343	220	<u>5.00</u>	2.37	135	84	<u>5.00</u>	3.18	59	37
UGR= 11				UGR= 12				UGR= 16			
								<b>60° Lens – 9W/11W</b>			
H(m)	D(m)	Emax(lx)	Eav(lx)					H(m)	D(m)	Emax(lx)	Eav(lx)
<b>60°</b>								<b>60°</b>			
<u>1.00</u>	1.29	669	316					<u>1.00</u>	1.29	669	316
<u>2.00</u>	2.59	167	79					<u>2.00</u>	2.59	167	79
<u>3.00</u>	3.88	74	35					<u>3.00</u>	3.88	74	35
<u>4.00</u>	5.17	42	20					<u>4.00</u>	5.17	42	20
<u>5.00</u>	6.46	27	13					<u>5.00</u>	6.46	27	13
								UGR = 19			

## NOTES

Equipped with 100 cm neoprene cable. Additional cable length available upon request.

